



Multipurpose Agriculture Facility

Orr Research Center Corporation | University of Illinois | John Wood Community College





Opening in August 2022!

HISTORY:

The Orr Corporation organized in 1978 with citizen membership from 11 western Illinois counties (Adams, Brown, Calhoun, Cass, Greene, Jersey, Macoupin, Morgan, Pike, Schuyler, and Scott counties). The Orr Corporation facilitated an agreement between the University of Illinois and John Wood Community College, which generated an educational partnership and created the University of Illinois Agricultural Research & Demonstration Center near Perry, Illinois, referred to as the Orr Center.

The uniqueness of this site is that the state's land grant institution and a community college work cooperatively, sharing the site, the equipment and materials, and the research, data and knowledge.



ORR CORPORATION BOARD

Matthew Bradshaw (Chair) Griggsville, IL	Curt Boylen Mt. Sterling, IL	Alan Koch Mt. Sterling, IL	Eric Rabe Mendon, IL
Tom McMurrin (Vice Chair) Rushville, IL	Lynn Curry Griggsville, IL	Brian Mansfield Woodson, IL	John Schlafer Dow, IL
John McIntire (Secretary) Pittsfield, IL	Allen Fischer Arenzville, IL	Diana McCleary Liberty, IL	Dan Schmidt Carrollton, IL
Bruce Duesterhaus (Treasurer) Fowler, IL	Wayne Fuhler Golden Eagle, IL	Paul Miller Chapin, IL	Jacob Schmidt Camp Point, IL
	Robert Johnson Alexander, IL	Jerry Moss Baylis, IL	Wilson Schultz Godfrey, IL
	David Klaus Carlinville, IL	Robert Reed Nebo, IL	



**ORR RESEARCH
CENTER**



**JOHN WOOD
COMMUNITY COLLEGE**



THE PROJECT:

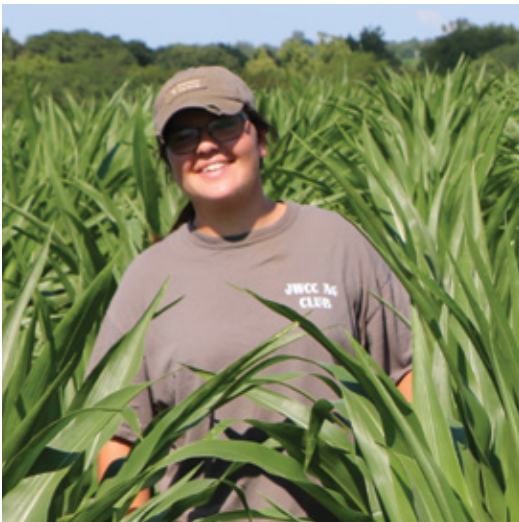
Construction of a 24,000-square-foot multipurpose agricultural facility next to the University of Illinois Agricultural Research & Demonstration Center and the JWCC Agricultural Education Center near Perry, IL.

THE NEED:

- Address multiple agricultural education and development issues in West Central Illinois rural communities
- Enhance research, teaching and activities throughout the region

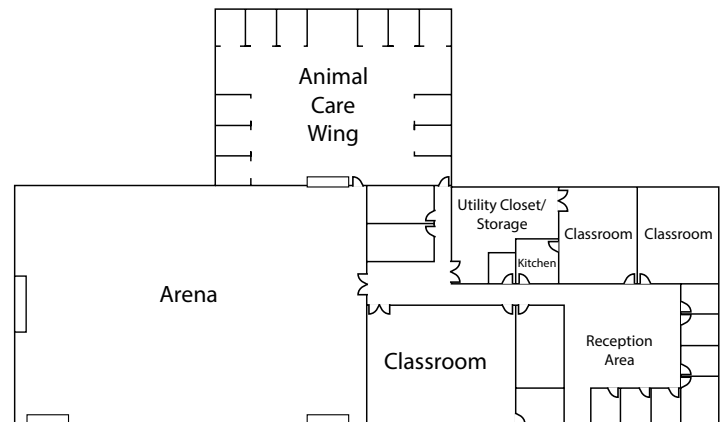
THE BENEFITS:

- Will support initiatives of the FFA, 4-H chapters from more than 20 area high schools, and youth organizations
- Serve as a forum for competitive events like livestock judging contests and other career development opportunities
- Used for educational and demonstration events for area environmental and wildlife associations
- Facilitate agricultural and economic development organizations to emphasize the advantages in rural regions



SPECIAL FEATURES:

- Arena for animal science programs: livestock evaluation, demonstrating best practices in animal care, and wildlife conservation.
- Livestock handling facilities, including pens, chutes, temporary stalling and wash bay.
- Hands-on lab environment for agronomic research on the unique soils of West Central Illinois.
- Flexible areas for classes and labs, as well as regional conferences and meetings.
- Accessible accommodations for seminars, trainings and meetings for local residents, organizations, and the University of Illinois and JWCC.



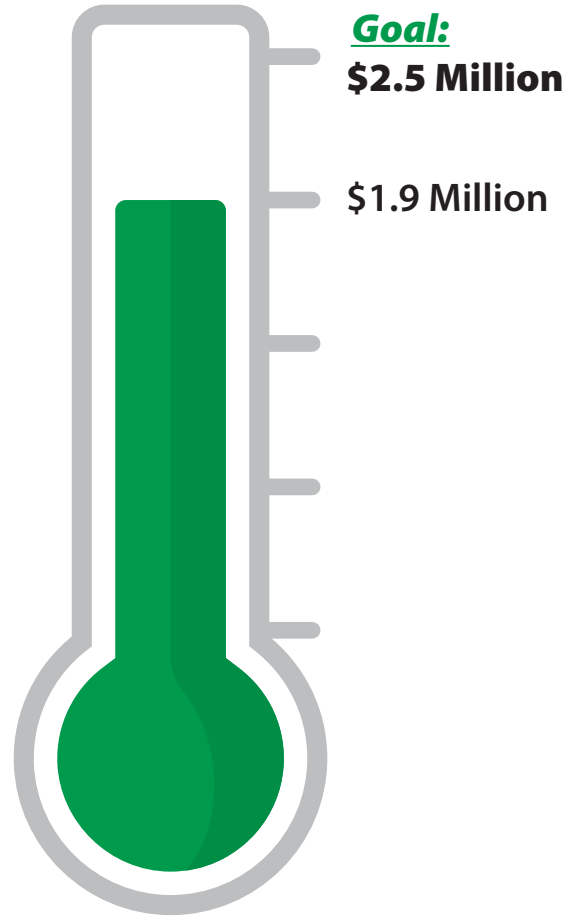
Proposed layout subject to change.



TOTAL
PLEGDED TO DATE:
\$1.9 million



GOAL
ESTIMATED COST:
\$2.5 million



HOW YOU CAN HELP:

Building and construction costs for this facility will be raised from private funds. The Orr Corporation invites you to support this Multipurpose Agricultural Facility at a level of your choosing.

\$20,000 and above	Platinum
\$10,000-\$19,999	Gold
\$5,000-\$9,999	Silver
\$1,000-\$4,999	Bronze
\$100-\$999	Green

Multiple year contributions accepted

SPONSORSHIP NAMING OPPORTUNITIES

Several naming opportunities are available for businesses and individuals to feature their business, family name or name of a loved one as a sponsor for certain areas of the facility.

Yes, I would like to contribute to the Orr Corporation Multipurpose Agriculture Facility!

Name _____

Address _____

City _____ State _____ Zip _____

Phone _____ Cell _____

Email _____

I would like to contribute \$ _____

_____ One time gift

_____ Multiple year gift

I am interested in learning about naming opportunities.

Please send your contribution to:
 Matt Bradshaw, Chair
 Orr Research
 Center Corporation
 37804 State Highway 104
 Baylis, IL 62314

Thank you for supporting the Orr Corporation's Multipurpose Agriculture Facility!