

FY2013 Unduplicated Headcount: 3,425

Enrolled at a four-year institution in FY2014: 699 of 3,425 (20.4%)

FY2013 Unduplicated Headcount (excluding summer): 2,958

Enrolled at a four-year institution in FY2014: 472 of 2,958 (16.0%)

Transfer Completers (AA, AS, AFA, AES, and AGS programs): 98 of 472 (20.8%)

Transfer Students (AA, AS, AFA, AGS, AES, and BAC 0101 students): 445 of 472 (92.3%)

FY2013 Unduplicated Transfer Headcount (AA, AS, AFA, AGS, AES, and BAC 0101 students, excluding summer): 2,064

Enrolled at a four-year institution in FY2014 (*Transfer-Transfer*): 443 of 2,064 (21.5%)

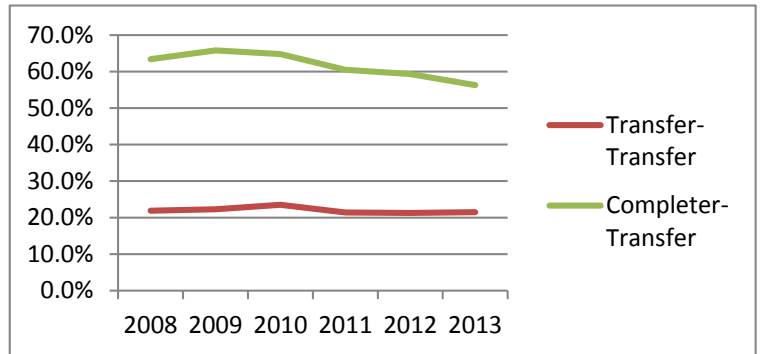
FY2013 Transfer Completers (AA, AS, AFA, and AGS programs): 174

Enrolled at a four-year institution in FY2014 (*Completer-Transfer*): 98 of 174 (56.3%)

Transfer-Transfer Rate: The number of students who were enrolled at JWCC in FY2013 in a transfer program (AA, AS, AFA, AGS, AES, or BAC) that enrolled at a four-year institution in FY2014.

Completer-Transfer Rate: The number of students who completed a transfer degree (AA, AS, AFA, AES, or AGS) at JWCC in FY2013 that enrolled in a four-year institution in FY2014.

FY:	Transfer-Transfer		Completer-Transfer	
	Freq:	Percent:	Freq:	Percent:
2008	533	21.9%	123	63.4%
2009	536	22.3%	158	65.8%
2010	606	23.5%	142	64.8%
2011	513	21.4%	107	60.5%
2012	450	21.3%	89	59.3%
2013	443	21.5%	98	56.3%



The following is the list of four-year institutions that our transfer students enrolled at in FY2014 (*Transfer-Transfer*):

Four-Year Institution	Frequency:	Percent:
QUINCY UNIVERSITY	93	21.0%
WESTERN ILLINOIS UNIVERSITY	69	15.6%
SOUTHERN ILLINOIS UNIVERSITY EDWARDSVILLE	38	8.6%
HANNIBAL-LAGRANGE UNIVERSITY	24	5.4%
CULVER STOCKTON COLLEGE	18	4.1%
UNIVERSITY OF ILLINOIS @ SPRINGFIELD	14	3.2%
BLESSING-RIEMAN COLLEGE OF NURSING	13	2.9%
LINDENWOOD UNIVERSITY	10	2.3%
ILLINOIS STATE UNIVERSITY	9	2.0%
SOUTHERN ILLINOIS UNIVERSITY CARBONDALE	9	2.0%
UNIVERSITY OF MISSOURI-COLUMBIA	9	2.0%
MISSOURI STATE UNIVERSITY	7	1.6%
UNIVERSITY OF ILLINOIS @ URBANA	6	1.4%

John Wood Community College**Office of Institutional Effectiveness**

IOWA STATE UNIVERSITY	5	1.1%
TRUMAN STATE UNIVERSITY	5	1.1%
ILLINOIS COLLEGE	4	0.9%
SAINT LOUIS UNIVERSITY	4	0.9%
MARYVILLE UNIVERSITY	3	0.7%
MISSOURI VALLEY COLLEGE	3	0.7%
UNIVERSITY OF MISSOURI-ST LOUIS	3	0.7%
WALDEN UNIVERSITY	3	0.7%
BLACKBURN COLLEGE	2	0.5%
BLESSING HOSPITAL SCHOOL OF RADIOLOGIC TECHNOLOGY	2	0.5%
DEPAUL UNIVERSITY	2	0.5%
DRAKE UNIVERSITY	2	0.5%
HARDING UNIVERSITY	2	0.5%
KANSAS STATE UNIVERSITY	2	0.5%
KAPLAN UNIVERSITY	2	0.5%
KNOX COLLEGE	2	0.5%
LINCOLN UNIVERSITY	2	0.5%
MACMURRAY COLLEGE	2	0.5%
NORTHWEST MISSOURI STATE UNIVERSITY	2	0.5%
ROOSEVELT UNIVERSITY	2	0.5%
TAYLOR UNIVERSITY	2	0.5%
UNIVERSITY OF KENTUCKY	2	0.5%
UNIVERSITY OF NORTHERN COLORADO	2	0.5%
UNIVERSITY OF WYOMING	2	0.5%
AMERICAN INTERCONTINENTAL UNIVERSITY	1	0.2%
ANDERSON UNIVERSITY	1	0.2%
ARKANSAS STATE UNIVERSITY	1	0.2%
ASHFORD UNIVERSITY	1	0.2%
BARRY UNIVERSITY	1	0.2%
BENEDICTINE UNIVERSITY	1	0.2%
BLESSING HOSPITAL SCHOOL OF MED LAB TECH	1	0.2%
BRIGHAM YOUNG UNIVERSITY - IDAHO FALL/WINTER	1	0.2%
BUTLER UNIVERSITY	1	0.2%
CAPELLA UNIVERSITY	1	0.2%
CARDINAL STRITCH UNIVERSITY	1	0.2%
CARTHAGE COLLEGE	1	0.2%
CEDARVILLE UNIVERSITY	1	0.2%
CENTRAL METHODIST UNIVERSITY	1	0.2%
CHAMBERLAIN COLLEGE OF NURSING - GRAD	1	0.2%
COLORADO CHRISTIAN UNIVERSITY	1	0.2%
COLORADO STATE UNIVERSITY	1	0.2%
CONCORDIA UNIVERSITY AT ST PAUL	1	0.2%
CORNELL COLLEGE	1	0.2%
DEVRY UNIVERSITY	1	0.2%
EASTERN WASHINGTON UNIVERSITY	1	0.2%
EMPORIA STATE UNIVERSITY	1	0.2%
EVANGEL UNIVERSITY	1	0.2%

John Wood Community College**Office of Institutional Effectiveness**

FLORIDA GULF COAST UNIVERSITY	1	0.2%
FONTBONNE UNIVERSITY	1	0.2%
GANNON UNIVERSITY	1	0.2%
INDIANA WESLEYAN UNIVERSITY	1	0.2%
IOWA WESLEYAN COLLEGE	1	0.2%
KENDALL COLLEGE	1	0.2%
KENTUCKY CHRISTIAN UNIVERSITY	1	0.2%
LAKE FOREST COLLEGE	1	0.2%
LOYOLA UNIVERSITY CHICAGO	1	0.2%
METROPOLITAN STATE UNIVERSITY OF DENVER	1	0.2%
MIDDLE TENNESSEE STATE UNIVERSITY	1	0.2%
MILLIKIN UNIVERSITY	1	0.2%
MISSOURI BAPTIST UNIVERSITY	1	0.2%
MISSOURI COLLEGE	1	0.2%
MISSOURI UNIVERSITY OF SCIENCE AND TECHNOLOGY	1	0.2%
MISSOURI WESTERN STATE UNIV	1	0.2%
NORTH CENTRAL COLLEGE	1	0.2%
NORTH CENTRAL UNIVERSITY	1	0.2%
NORTHERN ILLINOIS UNIVERSITY	1	0.2%
OKLAHOMA CITY UNIVERSITY	1	0.2%
OTTAWA UNIVERSITY ONLINE U/G	1	0.2%
RUSH UNIVERSITY	1	0.2%
ST AMBROSE UNIVERSITY	1	0.2%
TEXAS CHRISTIAN UNIVERSITY	1	0.2%
THOMAS EDISON STATE COLLEGE	1	0.2%
TRINITY INTERNATIONAL UNIVERSITY	1	0.2%
UNIVERSITY OF ALABAMA	1	0.2%
UNIVERSITY OF CENTRAL OKLAHOMA	1	0.2%
UNIVERSITY OF IDAHO	1	0.2%
UNIVERSITY OF ILLINOIS AT CHICAGO	1	0.2%
UNIVERSITY OF KANSAS	1	0.2%
UNIVERSITY OF NORTHERN IOWA	1	0.2%
UNIVERSITY OF PHOENIX	1	0.2%
UNIVERSITY OF TEXAS - SAN ANTONIO	1	0.2%
UNIVERSITY OF WISCONSIN - PLATTEVILLE	1	0.2%
WASHINGTON UNIVERSITY	1	0.2%
WEBSTER UNIVERSITY TERMS	1	0.2%
WILMINGTON UNIVERSITY	1	0.2%
Unknown	1	0.2%
<i>Total</i>	<i>443</i>	<i>100.0%</i>

The following is the list of four-year institutions that transfer degree completers enrolled at in FY2014 (*Completer-Transfer*):

Four-Year Institution:	Frequency:	Percent:
WESTERN ILLINOIS UNIVERSITY	26	26.5%
QUINCY UNIVERSITY	22	22.4%

John Wood Community College**Office of Institutional Effectiveness**

SOUTHERN ILLINOIS UNIVERSITY EDWARDSVILLE	9	9.2%
CULVER STOCKTON COLLEGE	3	3.1%
MISSOURI STATE UNIVERSITY	3	3.1%
UNIVERSITY OF ILLINOIS @ SPRINGFIELD	3	3.1%
UNIVERSITY OF MISSOURI-ST LOUIS	3	3.1%
HANNIBAL-LAGRANGE UNIVERSITY	2	2.0%
IOWA STATE UNIVERSITY	2	2.0%
LINCOLN UNIVERSITY	2	2.0%
AMERICAN INTERCONTINENTAL UNIVERSITY	1	1.0%
BLESSING HOSPITAL SCHOOL OF RADIOLOGIC TECHNOLOGY	1	1.0%
COLORADO STATE UNIVERSITY	1	1.0%
CONCORDIA UNIVERSITY AT ST PAUL	1	1.0%
CORNELL COLLEGE	1	1.0%
DEPAUL UNIVERSITY	1	1.0%
EMPORIA STATE UNIVERSITY	1	1.0%
EVANGEL UNIVERSITY	1	1.0%
FLORIDA GULF COAST UNIVERSITY	1	1.0%
GANNON UNIVERSITY	1	1.0%
IOWA WESLEYAN COLLEGE	1	1.0%
LINDENWOOD UNIVERSITY	1	1.0%
METROPOLITAN STATE UNIVERSITY OF DENVER	1	1.0%
MIDDLE TENNESSEE STATE UNIVERSITY	1	1.0%
MISSOURI VALLEY COLLEGE	1	1.0%
NORTH CENTRAL COLLEGE	1	1.0%
SOUTHERN ILLINOIS UNIVERSITY CARBONDALE	1	1.0%
TAYLOR UNIVERSITY	1	1.0%
TRUMAN STATE UNIVERSITY	1	1.0%
UNIVERSITY OF ILLINOIS @ URBANA	1	1.0%
UNIVERSITY OF MISSOURI-COLUMBIA	1	1.0%
UNIVERSITY OF WYOMING	1	1.0%
WALDEN UNIVERSITY	1	1.0%
<i>Total</i>	<i>98</i>	<i>100.0%</i>